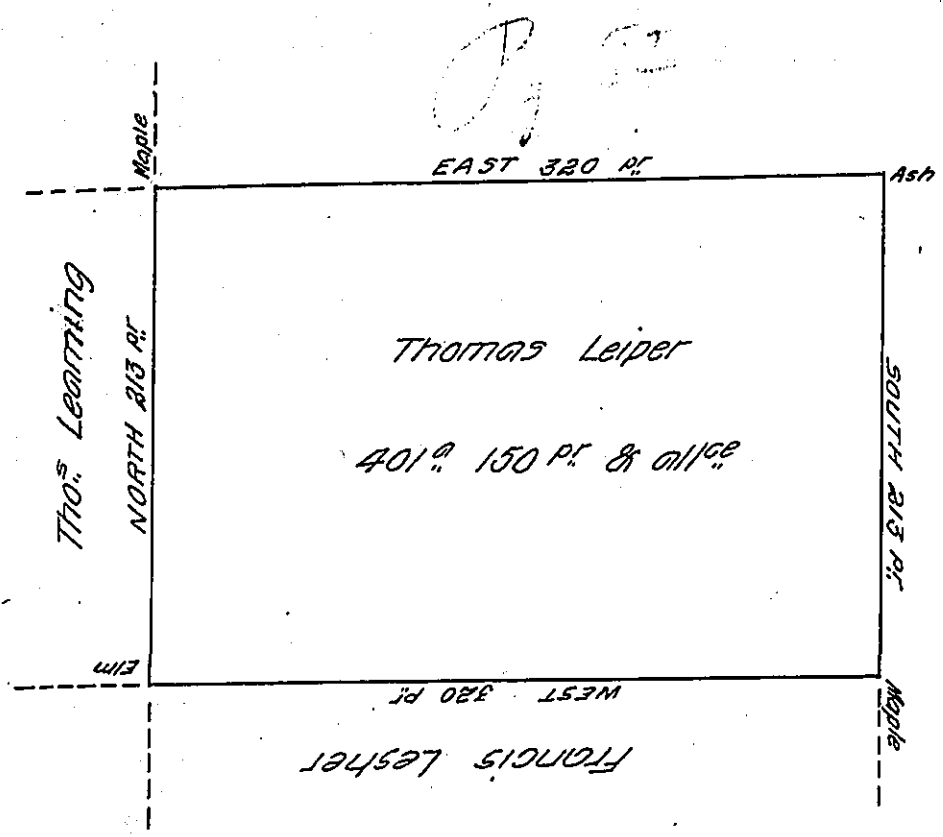


2-120-83



Situate on the west side of French Creek in Allegheny County  
 Containing 401 acres and 150 p<sup>t</sup> and allowance of six P cent  
 for roads &c. Surveyed the 26<sup>th</sup> day of October 1794 in pursuance  
 of a warrant bearing date the 30<sup>th</sup> day of May 1792  
 To Daniel Brodhead Esq<sup>r</sup> } W<sup>m</sup> Power D<sup>y</sup> S<sup>r</sup>  
 Surveyor General

IN TESTIMONY that the above is a copy of the original remaining on file in  
 the Department of Internal Affairs of Pennsylvania, made  
 conformably to an Act of Assembly approved the 16th day of  
 February, 1833, I have hereunto set my Hand and caused  
 the Seal of said Department to be affixed at Harrisburg,  
 this fourteenth day of September 1905

*Joseph P. Brown*  
 Secretary of Internal Affairs.